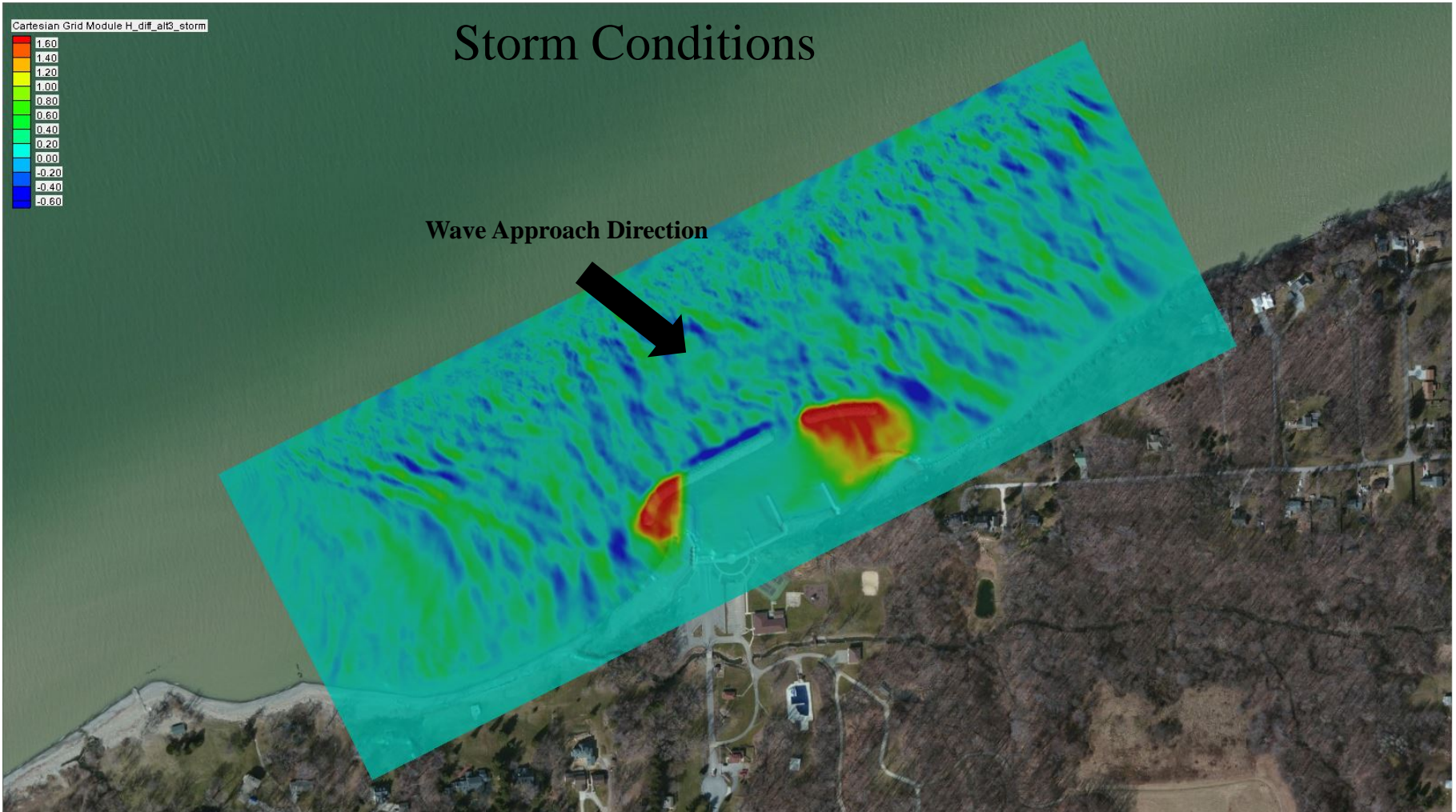
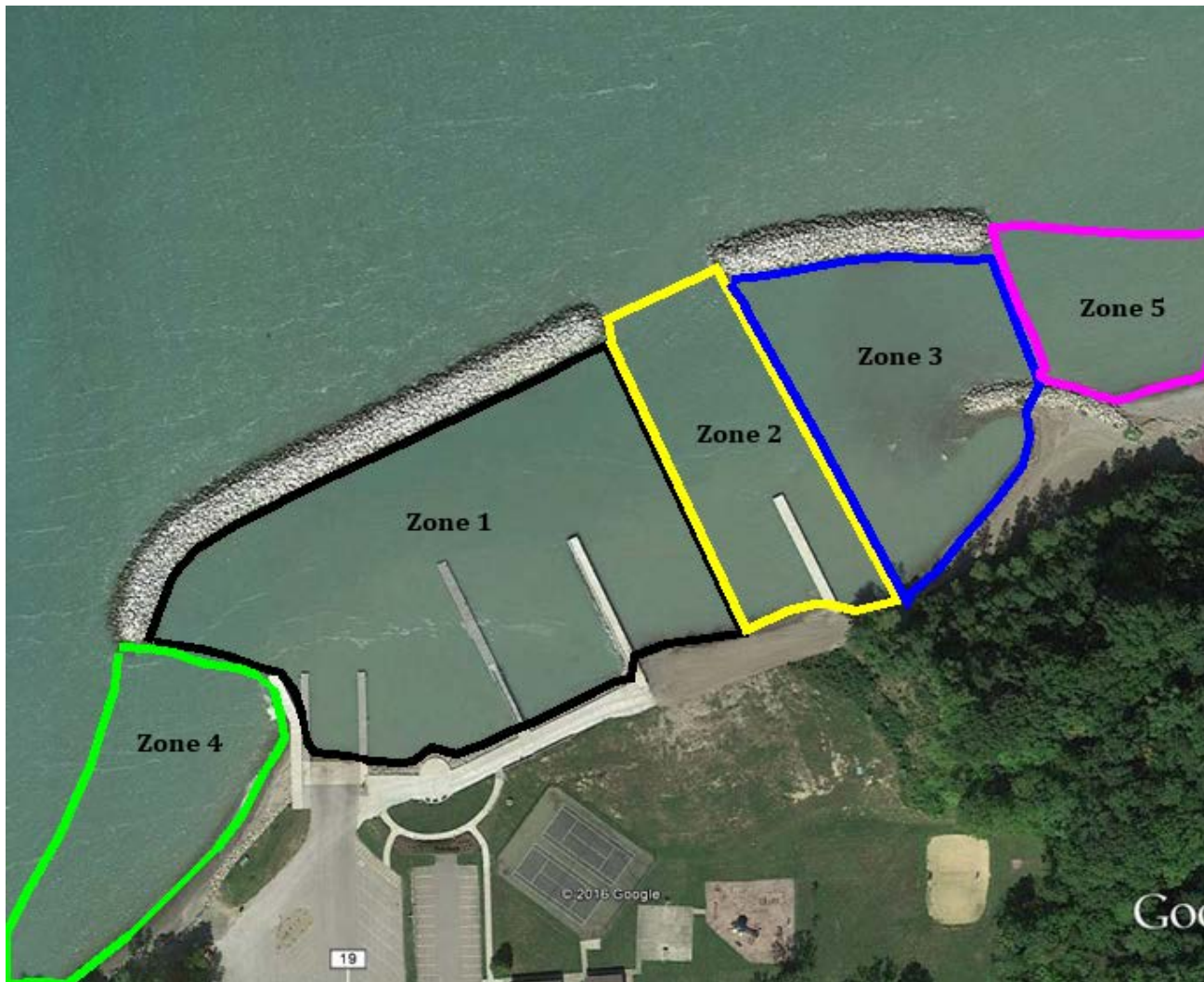


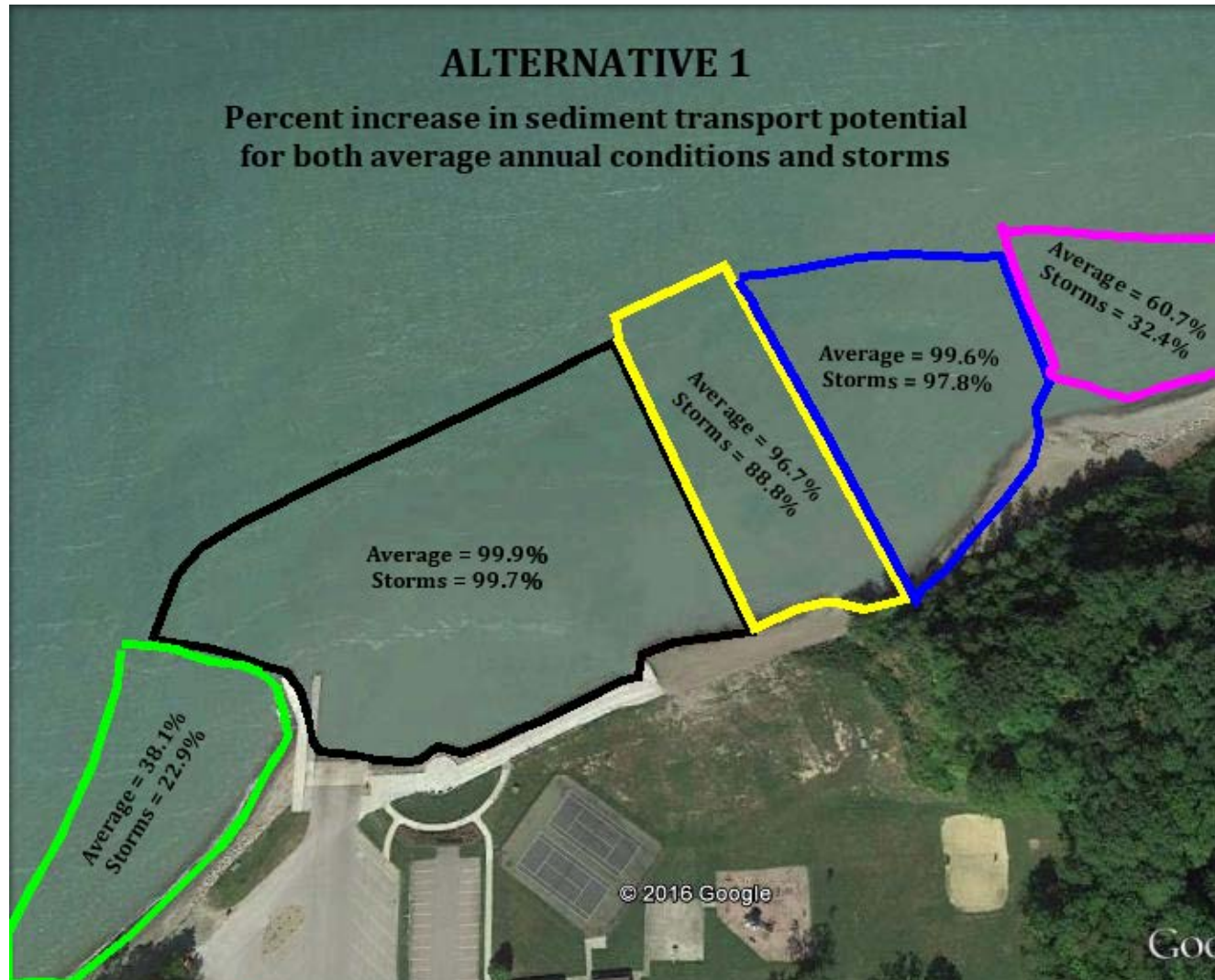
Alternative #3 Energy Changes



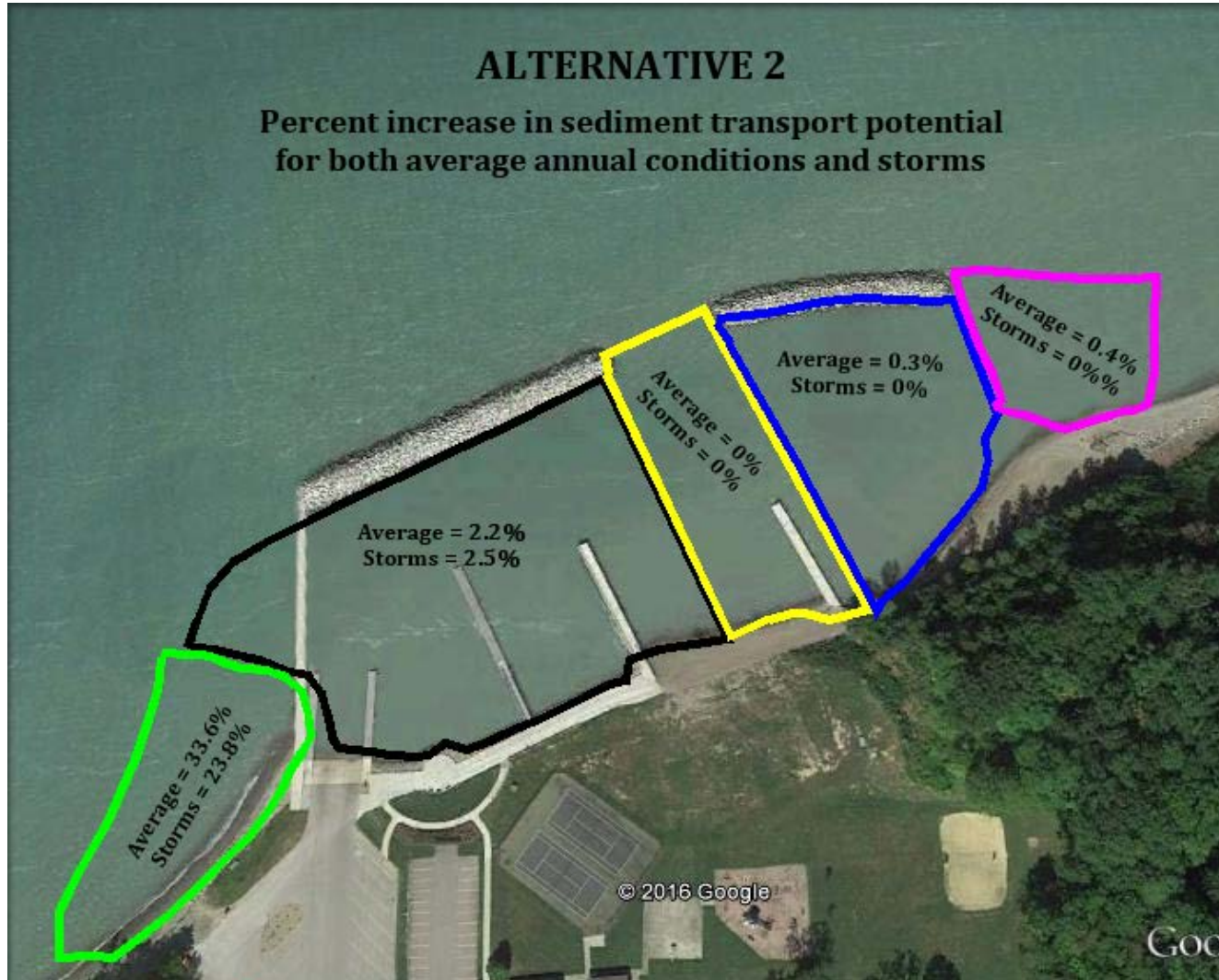
Change in Transport Potential



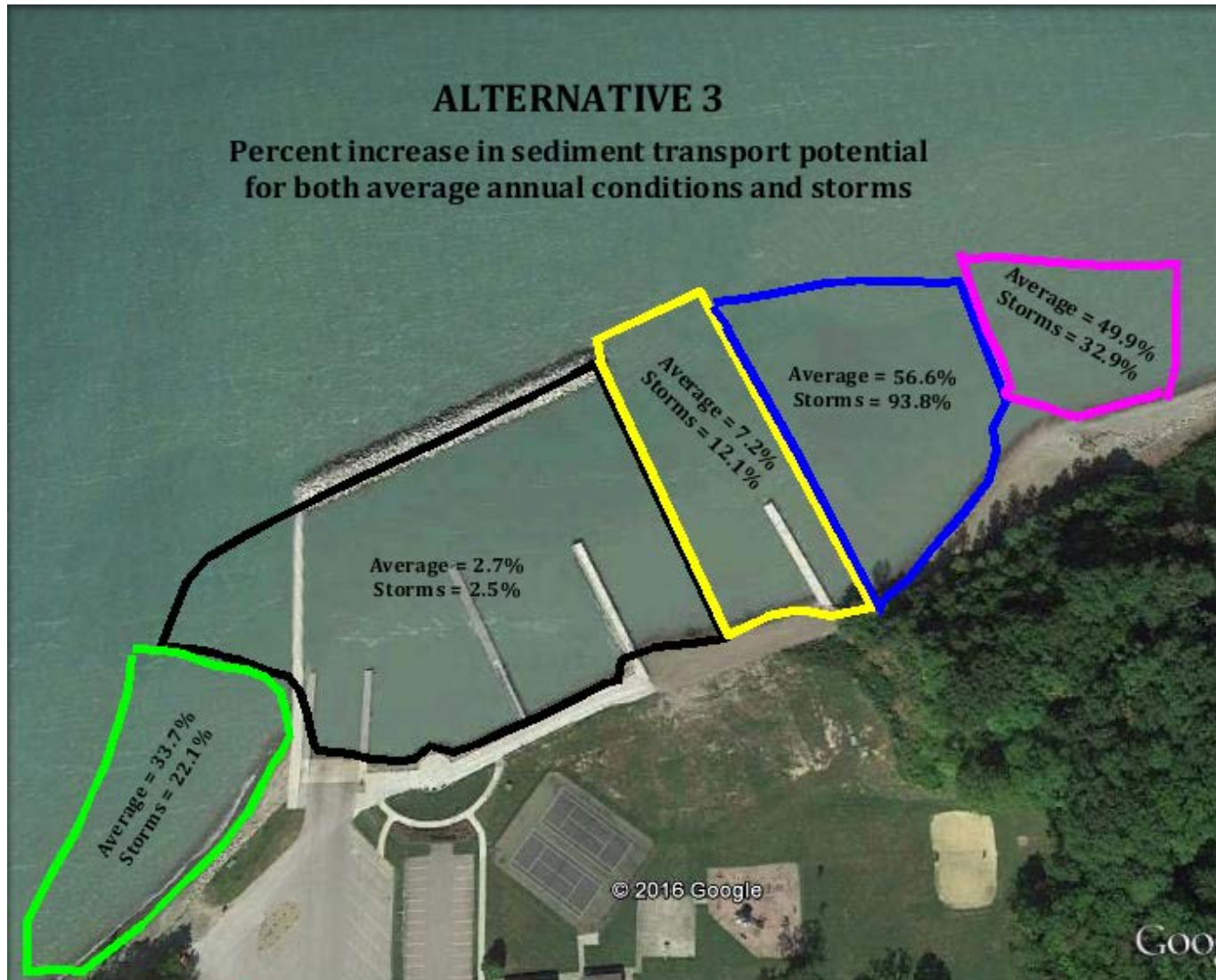
Alt. 1 - Transport Potential Change



Alt. 2 - Transport Potential Change



Alt. 3 - Transport Potential Change



Alternatives Summary

Alternative 1

- Minimal future bypassing expected due to minimal interruption
- Still some sand accumulation at the binwall, which could be modified to further enhance bypassing
- Armor units could be beneficially reused

Alternative 2

- Some possible increased natural bypassing, but minor improvement
- Shoaling locations in harbor will shift, dredging expected without proper proactive maintenance

Alternative 3

- Increased natural bypassing expected, but still significant maintenance requirements (less than 50% improvement)
- Diffraction patterns will shift shoaling locations in harbor, dredging expected without proper proactive maintenance

